

OLDTIMERTOOLS

...future meets tradition

Tool for Lamborghini

LMG 3

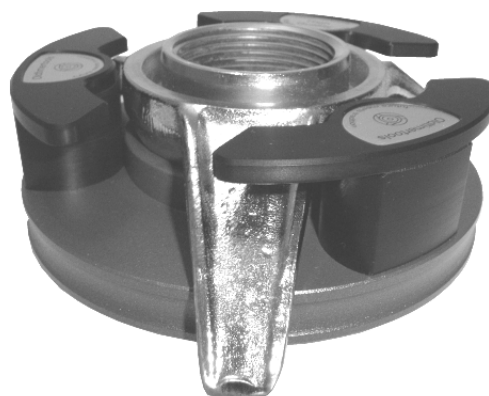
This special tool has been developed for easy tightening and unscrewing wing-nuts. We use high-strength aluminium alloys as they are used for aircraft-construction so that we can assure very stable and light tools. To avoid damage to the wing-nut the tool coatings are made of high-quality plastics.

The drive comes from a 1" square. With an adapter it can be reduced to a ½" square for allowing using a torque key.

Wing-nut



Wing-nut in Tool



Tool LMG 3

You will find our range of equipment on the back.

OLDTIMERTOOLS

...future meets tradition

Accessoires

When unscrewing the nuts very high powers can develop. Therefore we recommend our adapter 1" on $\frac{3}{4}$ " and the big $\frac{3}{4}$ " ratchet with screw able handle bar extension.

You need an adapter 1" on $\frac{3}{4}$ ".

For the right distance between ratchet and car body you need a 100 mm $\frac{3}{4}$ " square extension.

For transporting the vehicle we recommend our special tool box fitted with soft textile for protection (protective sheath).

Large $\frac{3}{4}$ " ratchet with grip extension, 75 cm long.

Art. Nr. K500-34 G750-V



torque key
60 - 300 Nm

Art. Nr. D60-300



$\frac{3}{4}$ " joint handle 65 cm long.

Art. Nr. GLD-34



Adapter $\frac{3}{4}$ "-1 $\frac{1}{2}$ "

Art. Nr. V12-34



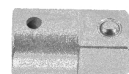
Extension $\frac{3}{4}$ " 100 mm long

Art. Nr. V100-34



Adapter 1"- $\frac{3}{4}$ "

Art. Nr. V34-1



protective sheath big, for tools

Art. Nr. F500-XL



protective sheath long, for ratchet or torque key

Art. Nr. F300-CL



If you have any questions please don't hesitate to send a mail to:
info@oldtimertools.de