

# OLDTIMERTOOLS

*...future meets tradition*

## Tool for Porsche

### PRS 95

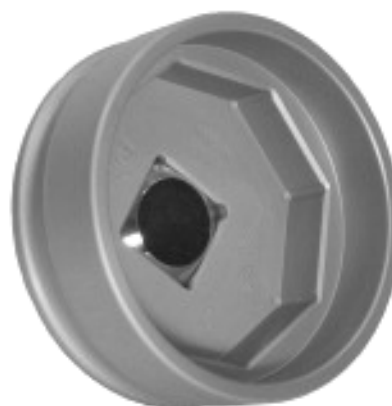
This special tool has been developed for easy tightening and unscrewing 8-point-nuts. We use high-strength aluminium alloys as they are used for aircraft-construction so that we can assure very stable and light tools.

The drive comes from a 1" square. With an adapter it can be reduced to a 1/2" square for allowing using a torque key.

8-point-nut



Tool



### Tool PRS 95

---

You will find our range of equipment on the back.

# OLDTIMERTOOLS

*...future meets tradition*

## Accessoires

When unscrewing the nuts very high powers can develop. Therefore we recommend our adapter 1" on 3/4" and the big 3/4" ratchet with screw able handle bar extension.

You need an adapter 1" on 3/4".

For transporting the vehicle we recommend our special tool box fitted with soft textile for protection (protective sheath).

Large 3/4" ratchet with grip extension, 75 cm long.

**Art. Nr. K500-34 G750-V**



Torque key  
60 - 300 Nm

**Art. Nr. D60-300**



3/4" joint handle 65 cm long.

**Art. Nr. GLD-34**



Adapter 3/4"-1/2"

**Art. Nr. V12-34**



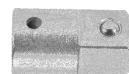
Extension 3/4" 100 mm long

**Art. Nr. V100-34**



Adapter 1"-3/4"

**Art. Nr. V34-1**



protective sheath big, for tools

**Art. Nr. F100-PC**



protective sheath long, for ratchet or torque key

**Art. Nr. F300-CL**



---

If you have any questions please don't hesitate to send a mail to:  
[info@oldtimertools.de](mailto:info@oldtimertools.de)